

File no 01 For Sale Condominium

PPE Bel-Air
Apartment 3 1/2 rooms
With Garage
Price : CHF 550'000--



DESCRIPTION OF THE PROPERTY :

Basement Floor :

- . 1 Technical room with oil tank
- . 1 Laundry room for use by all residents
- . 1 Cellar Private

Ground Floor :

- . 1 Entrance hall
- . 1 Large comfortable living-room
- . 1 Close kitchen
- . 1 Dining recess for 6 to 8 people
- . 1 Wc Separat

First Floor :

- . 2 Large bedrooms with cupboards
- . 1 Bathroom with washbasin and Wc

- Surface of the apartment : **70. m2**
- Total Surface : 70.00 m2
- Total annual charges : **CHF 4'237.50**
- Total reserve fund : **CHF 1'695.00**
- Total Annual Charges : CHF 5'932.50

GENERAL INFORMATION

- . Year built : **1968**
- . General condition of the chalet : **good**
- . Condition of the inside of the apartment : **in condition**
- . Orientation : **South-West**
- . Environment : **Village**
- . local Tax : **0.76**
- . Availability for foreign buyer : **Yes**
- . Availability for Swiss buyer : **Immediately**

CHALET LOCATION

Distance to : By car/on foot

- | | |
|-------------------------|------------------|
| . Lifts Isenau : | 5 min. / 25 min. |
| . Lifts Meilleret : | 5 min. / 25 min. |
| . Glacier 3000 : | 7 min. / |
| . Shops & restaurants : | 5 min. / 25 min. |

Distance to cities : by car

- | | |
|----------------------|-------------|
| . Aigle : | 25 minutes |
| . Gstaad : | 25 minutes |
| . Château-d'Oex : | 35 minutes |
| . Montreux : | 35 minutes |
| . Vevey : | 45 minutes |
| . Lausanne : | 55 minutes |
| . Fribourg : | 1.00 heure |
| . Genève : | 1.30 heures |
| . Berne (Capitale) : | 2.00 heures |
| . Zürich : | 3.00 heures |
| . Bâle : | 3.5 heures |

PHOTOS VIEWS
CHALET « PPE BEL-AIR »



PHOTOS VIEWS
CHALET « PPE BEL-AIR »



PHOTOS LIVING-ROOM CHALET « PPE BEL-AIR »



PHOTOS LIVING-ROOM CHALET « PPE BEL-AIR »



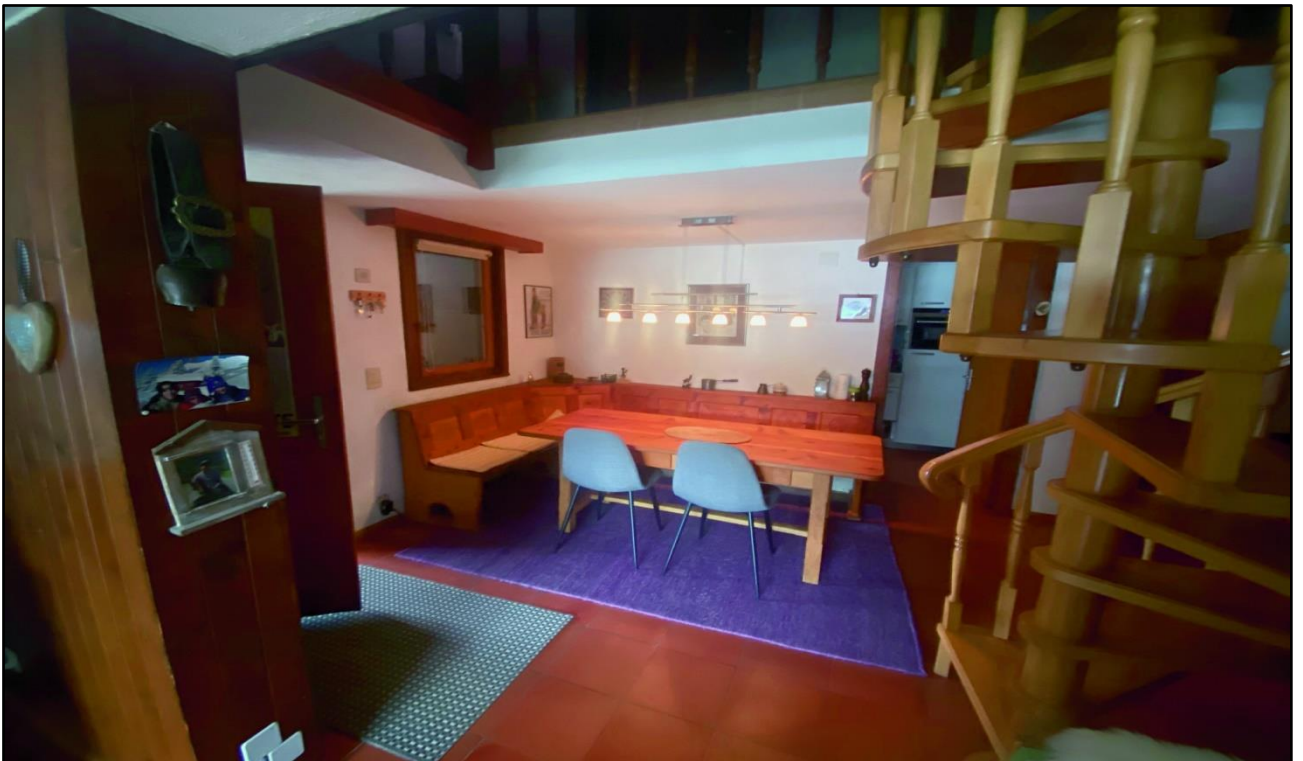
PHOTOS LIVING-ROOM CHALET « PPE BEL-AIR »



**PHOTOS LIVING-ROOM
CHALET « PPE BEL-AR »**



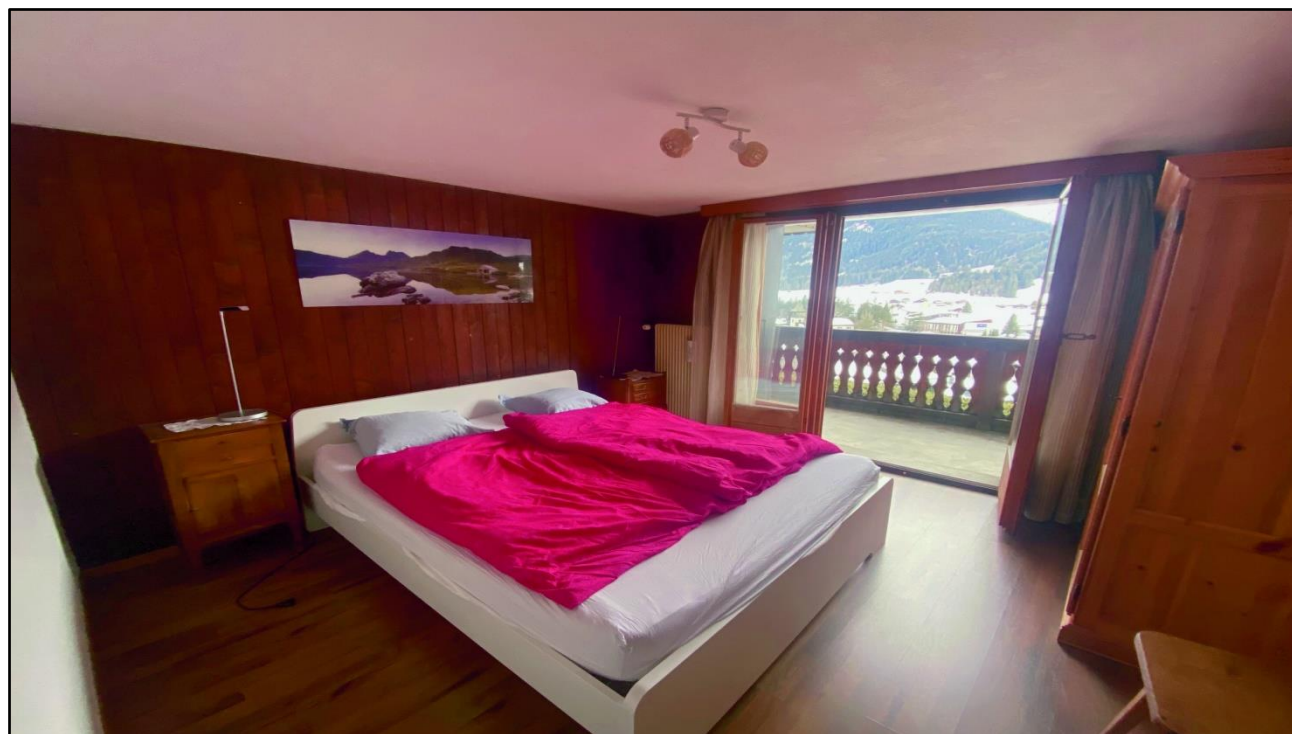
PHOTOS DINING ROOMS CHALET « PPE BEL-AIR »



PHOTOS KITCHEN CHALET « PPE BEL-AIR »



PHOTOS BEDROOMS CHALET « PPE-BEL-AIR »



**PHOTOS BEDROOMS
CHALET « PPE BEL-AIR »**



**PHOTOS VIEWS
CHALET « PPE BEL-AIR »**



▪ Opening hours of the office :

- Monday 8h00 - 12h00 / 13h30 - 17h00
- Tuesday 8h00 - 12h00 / 13h30 - 17h00
- Wednesday 8h00 - 12h00 / 13h30 - 17h00
- Thursday 8h00 - 12h30 / 13h30 - 17h00
- Friday 8h00 - 12h00 / 13h30 - 17h00
- Saturday 10h00 - 12h00
- Or by appointment !



Laurent Moillen

Val-Neige - 1865 Les Diablerets
Tél. +41 (0)24 492 31 40 - Fax +41 (0)24 492 25 07